

CRIMINAL JUSTICE ADVISORY BOARD DATA COMMITTEE REPORT YEAR END 2022

CRIMINAL COURT FILINGS AND DISPOSITIONS

| | <u>2018</u> | <u>2019</u> | <u>2020</u> | <u>2021</u> | <u>2022</u> |
|-----------------------------------|-------------|-------------|-------------|-------------|-------------|
| Cases Filed | 5588 | 5306 | 3645 | 4270 | 4287 |
| New Cases | 4629 | 4488 | 2969 | 3466 | 3514 |
| Reopened Cases | 959 | 818 | 676 | 804 | 773 |
| Cases Disposed | 5898 | 5306 | 3710 | 4219 | 4315 |
| Bench Warrant (Failure to Appear) | 857 | 781 | 599 | 789 | 718 |
| Withdrawn/Dismissed | 125 | 97 | 94 | 93 | 83 |
| Percent of total ¹ | 2.5% | 2.1% | 3% | 2.7% | 2.3% |
| ARD | 1718 | 1705 | 1212 | 1072 | 1245 |
| Percent of total ¹ | 34% | 37.7% | 40% | 31.3% | 34.6% |
| Guilty Plea | 3168 | 2684 | 1709 | 2186 | 2211 |
| Percent of total ¹ | 63% | 59.3% | 54.9% | 63.7% | 61.5% |
| Bench Trial | 12 | 18 | 7 | 11 | 5 |
| Percent of total ¹ | 0.2% | 0.4% | 0.2% | 0.3% | 0.1% |
| Jury Trial | 15 | 21 | 8 | 25 | 19 |
| Percent of total ¹ | 0.3% | 0.5% | 0.3% | 0.7% | 0.5% |
| Transferred Cases ² | | | | 5 | 5 |
| Percent of total ¹ | | | | 0.2% | 0.1% |
| Rule 5863 ³ | | | | 38 | 29 |
| Percent of total ¹ | | | | 1.1% | 0.8% |
| Year-End Cases Available | 1289 | 1170 | 1105 | 1156 | 1142 |

New Criminal Charges Recidivism Rates

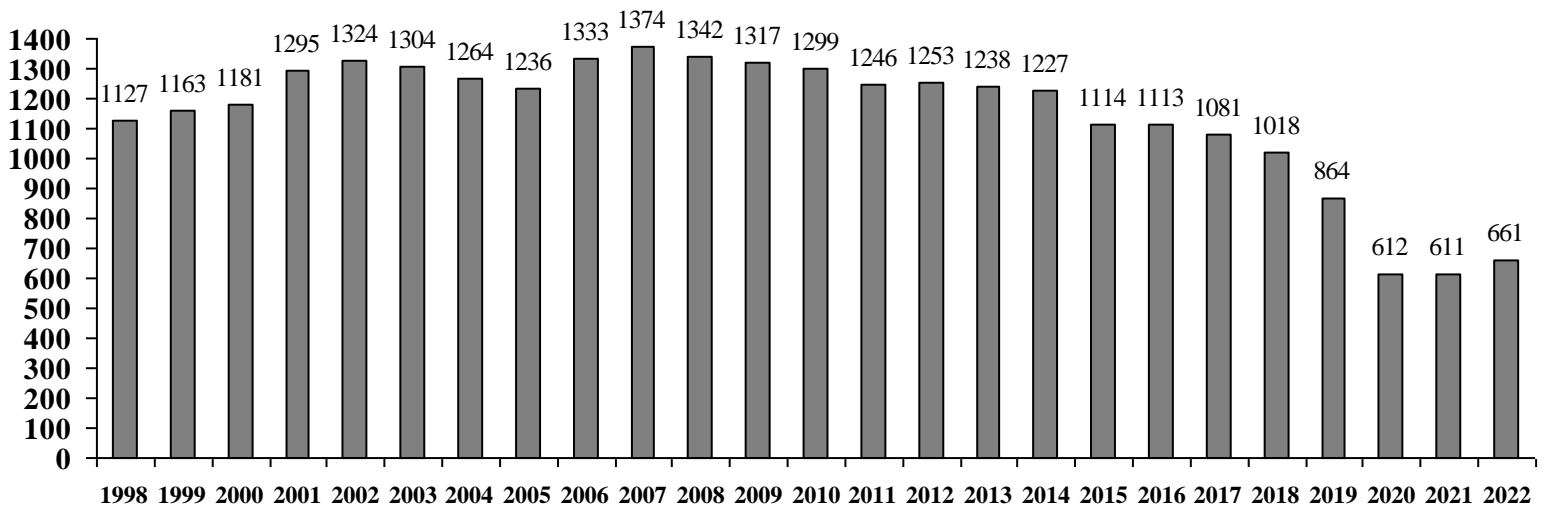
The following table represents the recidivism rate summaries for offenders returning due to new criminal charges for each of the 2017 through 2021 datasets.

| | 2017 | 2018 | 2019 | 2020 | 2021 |
|-------------------------------|---------------|---------------|---------------|-------------|-------------|
| 3-year recidivism rate | 32.57% | 27.23% | 26.43% | | |
| 2-year recidivism rate | 27.52 % | 22.88% | 21.10% | 21.11% | |
| 18 months | 23.90 % | 19.54% | 17.83% | 17.59% | |
| 1-year recidivism rate | 18.56 % | 16.00 % | 13.93% | 13.73% | 12.67% |
| 6 months | 11.17 % | 8.99% | 7.25% | 7.15% | 6.49% |

DEPARTMENT OF CORRECTIONS (ADULT SYSTEM)⁴

| | <u>2018</u> | <u>2019</u> | <u>2020</u> | <u>2021</u> | <u>2022</u> |
|-----------------------------|---|---|---|---|---|
| Total number of commitments | 5448 | 5250 | 3432 | 3018 | 3555 |
| Males | 4381 (80.4%) | 4225 (80.5%) | 2804 (81.7%) | 2506 (83%) | 2911 (81.9%) |
| Females | 1067 (19.6%) | 1025 (19.5%) | 628 (18.3%) | 512 (17%) | 644 (18.1%) |
| Race (Male) ⁵ | White: 1976 (45.1%) Hisp: 1085 (24.8%) Blk: 1079 (24.6%) Other: 242 (5.5%) | White: 2009 (47.6%) Hisp: 933 (22.1%) Blk: 1091 (25.8%) Other: 192 (4.5%) | White: 1320 (47.1%) Hisp: 664 (23.7%) Blk: 719 (25.6%) Other: 101 (3.6%) | White: 1156 (46.1%) Hisp: 608 (24.3%) Blk: 617 (24.6%) Other: 125 (5.0%) | White: 1324 (45.5%) Hisp: 684 (23.5%) Blk: 770 (26.4%) Other: 133 (4.6%) |
| Race (Female) ⁵ | White: 746 (69.9%) Hisp: 120 (11.3%) Blk: 156 (14.6%) Other: 45 (4.2%) | White: 680 (66.34%) Hisp: 157 (15.32%) Blk: 160 (15.61%) Other: 28 (2.73%) | White: 444 (70.7%) Hisp: 80 (12.7%) Blk: 84 (13.4%) Other: 20 (3.2%) | White: 358 (69.9%) Hisp: 61 (11.9%) Blk: 76 (14.8%) Other: 17 (3.3%) | White: 425 (66%) Hisp: 84 (13%) Blk: 112 (17.4%) Other: 23 (3.6%) |
| Average Daily Population | 1018 | 864 | 612 | 611 | 661 |
| Males | 862 (85%) | 732 (85%) | 534 (87%) | 546 (89%) | 590 (89%) |
| Females | 156 (15%) | 132 (15%) | 78 (13%) | 65 (11%) | 71 (11%) |

AVERAGE DAILY POPULATION



DEPARTMENT OF CORRECTIONS (ADULT SYSTEM) *continued*

| | <u>2018</u> | <u>2019</u> | <u>2020</u> | <u>2021</u> | <u>2022</u> |
|--|--------------|--------------|--------------|--------------|--------------|
| Sentenced ⁶ | 60.61% | 64.16% | 49.72% | 45.41% | 50.27% |
| Pre-trial detainees ⁷ | 29.25% | 31.6% | 46.29% | 47.32% | 42.19% |
| Pre-trial detainees in lieu of bail ⁸ | | 15.98% | 24.88% | 26.81% | 25.06% |
| Other ⁹ | 10.14% | 4.24% | 3.99% | 7.27% | 7.54% |
| Average # of county Prob./Parole violators in custody each day | 401 (39%) | 321 (37%) | 192 (31%) | 189 (31%) | 185 (28%) |
| Average length of stay (in days) ¹⁰ | 68.2 | 60 | 62 | 69 | 66 |
| Pre-Trial ALOS (in days) | | | | | 24 |
| Sentenced ALOS (in days) | | | | | 129 |
| Bed days for writs | 5761 | 7593 | 3253 | 5237 | 6572 |
| Average length of stay per writ (in days) | 11.1 | 14.44 | 18.91 | 17.93 | 15.14 |
| Number sentenced to State Correctional Institution | 299 | 276 | 90 | 142 | 233 |
| Juveniles charged and incarcerated as adults | 4 | 10 | 5 | 5 | 4 |

Psychiatric Data¹¹

Number of all new commitments referred to and evaluated by Mental Health clinicians.

| | <u>2018</u> | <u>2019</u> | <u>2020</u> | <u>2021</u> | <u>2022</u> |
|------------------------|-------------|-------------|-------------|-------------|-------------|
| Total, | 1092 | 1245 | 891 | 956 | 1430 |
| % of total | (18.5%) | (22.1%) | (24.9%) | (25.1%) | (31.6%) |
| Male, | 779 | 879 | 685 | 776 | 1042 |
| % of committed males | (16.1%) | (19.2%) | (23.4%) | (24.4%) | (28.1%) |
| Female, | 313 | 366 | 206 | 180 | 388 |
| % of committed females | (28.7%) | (34.5%) | (32.1%) | (28.8%) | (48%) |

Of the 1430 identified in 2022:

28% prior suicide attempt

35.5% current psychotropic medication use

46.4% prior psychiatric hospitalization

71.3% co-occurring drug and/or alcohol disorder

87.3% history of psychotropic medications

| | | | | | |
|--|-------|--------------|--------------|--------------|----------------|
| Average percent of population prescribed psychotropic meds | 38.3% | 40.4% | 37.9% | 43.2% | 45.5% |
| Average # of SMI inmates in custody each day | 58 | 49 (5.2%) | 44 (6.6%) | 65 (9.5%) | 107 (14.6%) |

DEPARTMENT OF CORRECTIONS (ADULT SYSTEM) *continued*

887 of the 3,555 commitments (24.3%) needed to undergo medically supervised detoxification.

| | <u>2018</u> | <u>2019</u> | <u>2020</u> | <u>2021</u> | <u>2022</u> |
|----------------------|-------------|-------------|-------------|-------------|-------------|
| Heroin | 228 | 208 | 167 | 202 | 201 |
| Alcohol | 321 | 394 | 199 | 192 | 258 |
| Alcohol/Heroin | 83 | 78 | 51 | 49 | 35 |
| Opiate | 61 | 78 | 46 | 46 | 151 |
| Methadone | 5 | 2 | 2 | 2 | 8 |
| Benzodiazepine | 76 | 65 | 45 | 37 | 50 |
| Various Combinations | 254 | 319 | 160 | 169 | 155 |

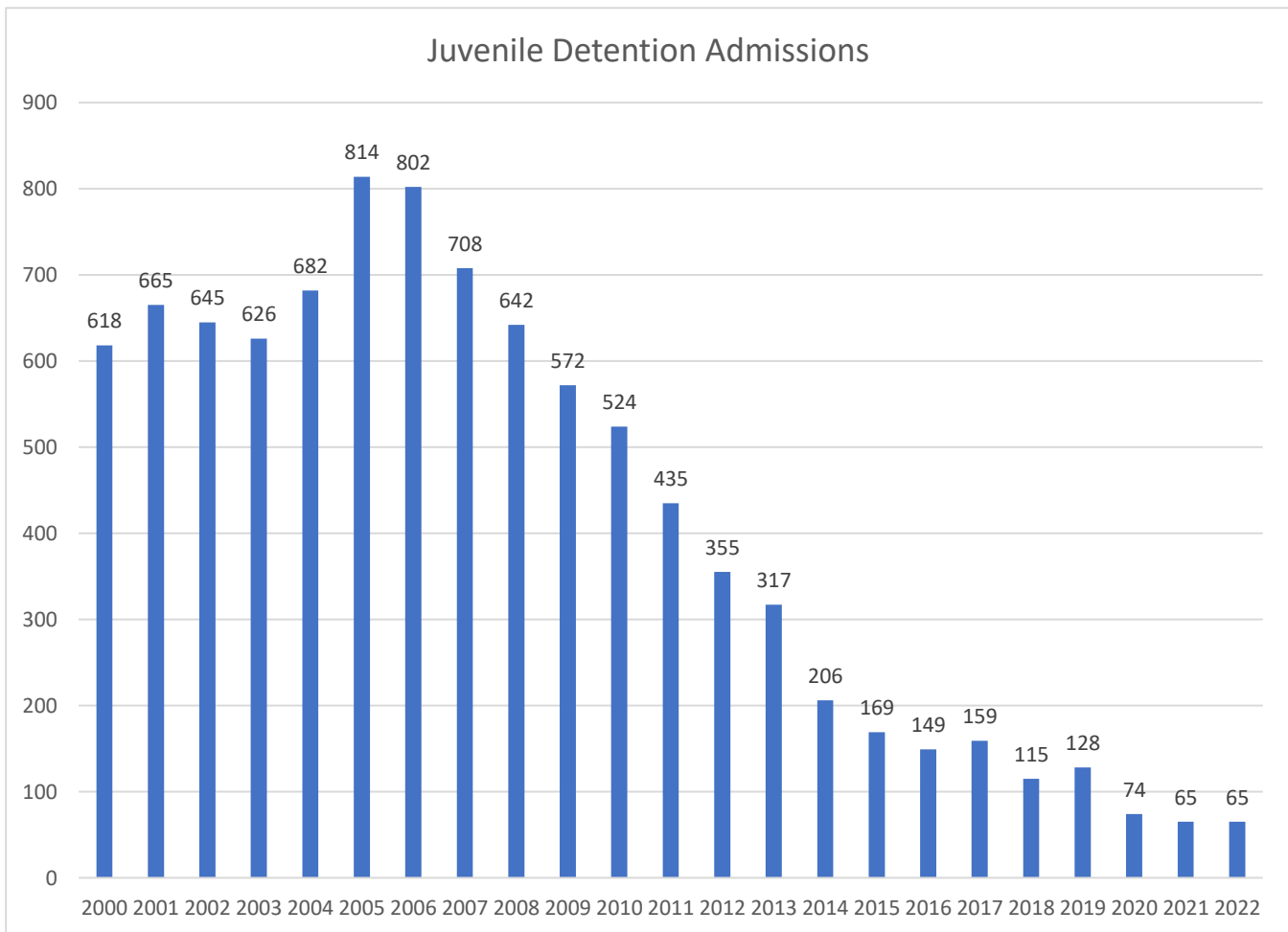
Points of Interest:

- The number of commitments and average daily population is increasing.
- The percentage of pre-trial detainees is decreasing.
- The total number of commitments referred to and evaluated by mental health clinicians at the jail has increased, especially for female detainees.
- The percent of jail population prescribed psychotropic medication continues to increase.
- The number of commitments requiring detox of opiates has more than tripled due to fentanyl.

JUVENILE PROBATION DEPARTMENT JUVENILE DETENTION

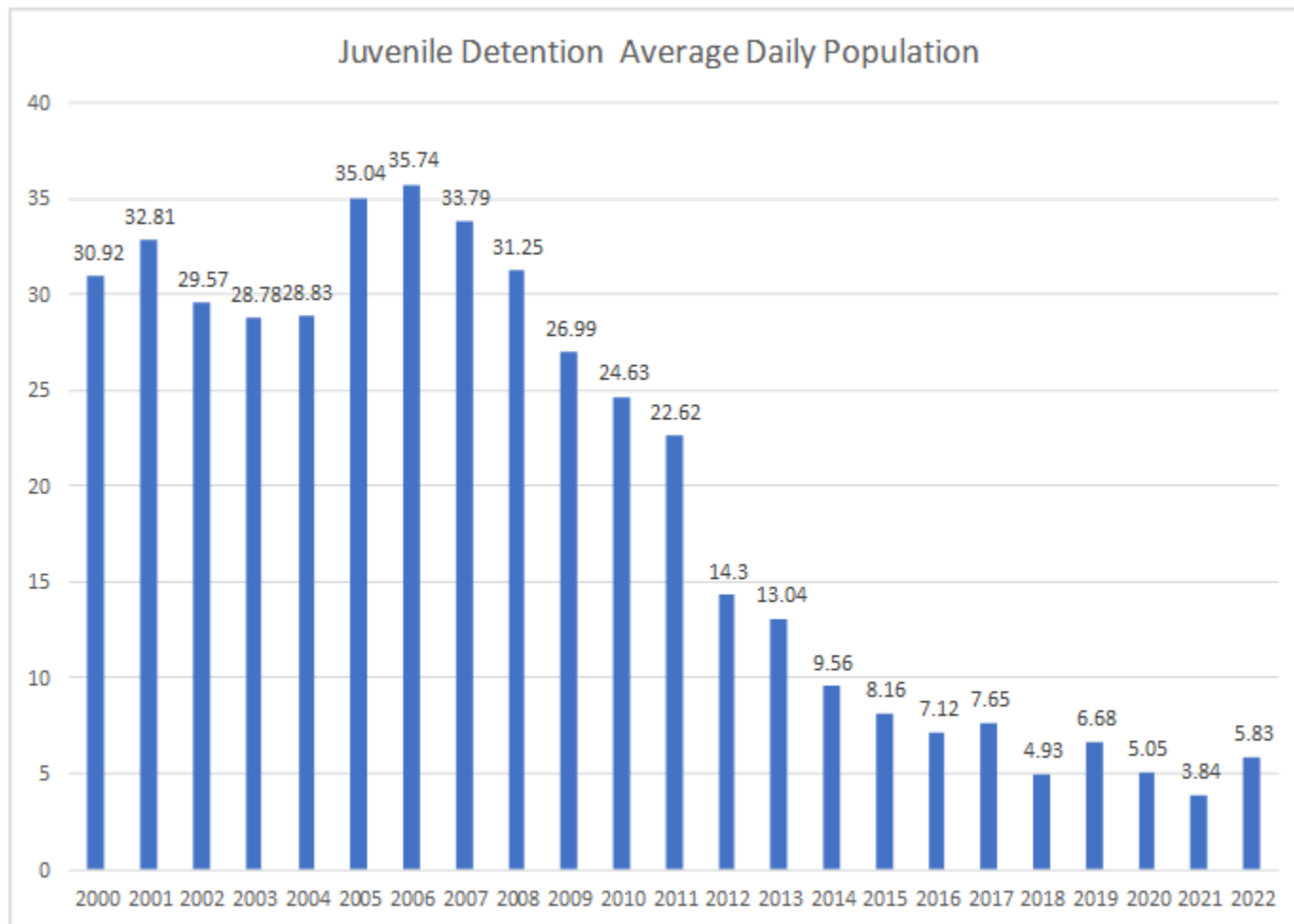
| | <u>2018</u> | <u>2019</u> | <u>2020</u> | <u>2021</u> | <u>2022</u> |
|--------------------------------|-------------|-------------|-------------|-------------|-------------|
| Number of Admissions | 115 | 128 | 74 | 65 | 65 |
| Male | 97 | 105 | 65 | 49 | 57 |
| Female | 18 | 23 | 9 | 16 | 8 |
| Average Daily Population | 4.93 | 6.68 | 5.05 | 3.84 | 5.83 |
| Average Length of Stay in Days | 15.7 | 19.05 | 25.34 | 21.54 | 30 |

ADMISSIONS



JUVENILE PROBATION DEPARTMENT JUVENILE DETENTION

AVERAGE DAILY POPULATION



Points of Interest:

- This past year we had the same number of admissions to detention but increased to our Average Daily Population (ADP) by two. Additionally, we saw an increase in the average length of stay. We have returned to similar to pre-pandemic numbers. The increase in our ADP has been a direct result of the secure bed shortage across the state.
- Throughout 2022, we continue to attempt to keep the number of occurrences that we could not find a bed for a youth to a minimum. It happened a bit more frequently this year which also is a result of longer detention stays.
- Currently we contract with four (4) different facilities in the eastern part of the state to handle our detention needs. We currently have 6 pre-paid beds with Abraxas Academy.
- We are in the process of finalizing a contract with an additional county to have additional beds available to reduce the times we need to release a youth that should be detained.

LEHIGH COUNTY JUVENILE PROBATION

| | <u>2018</u> | <u>2019</u> | <u>2020</u> | <u>2021</u> | <u>2022</u> |
|-------------------------------------|-------------|-------------|-------------|-------------|-------------|
| Referrals ¹² | 567 | 639 | 335 | 250 | 506 |
| Males | 73% | 71% | 72% | 72% | 72% |
| Females | 27% | 29% | 28% | 28% | 28% |
| Violations of Probation (Petitions) | 74 | 62 | 27 | 25 | 29 |
| Felony cases ¹³ | 213 | 225 | 124 | 153 | 209 |
| Misdemeanor cases ¹³ | 799 | 893 | 460 | 439 | 748 |

- The number of referrals increased in 2022 to a level very more comparable to 2019 numbers (prior to COVID-19).
- Felony charges went from 26% of the total amount of charges filed in 2021 to 22% in 2022. Felony charges referred to the department continues to remain slightly higher than the average from 2019 and earlier.
- The average number of violations of probation petitions filed in the past three years is 27. This marks the lowest percentage in department history for a three-year period.

| JUVENILE PROBATION PRIMARY DISPOSITIONS | | | | | |
|--|---|----------------------------|-----------------------|------------------|------------------|
| YEAR | Referrals/Written Allegations (Includes Non-Payments and | Informal Adjustment | Consent Decree | Probation | Placement |
| 2022 | 588 | 25 | 115 | 115 | 47 |
| 2021 | 321 | 16 | 54 | 66 | 39 |
| 2020 | 428 | 15 | 97 | 109 | 54 |
| 2019 | 839 | 28 | 125 | 162 | 78 |
| 2018 | 798 | 28 | 124 | 157 | 77 |
| 2017 | 958 | 29 | 160 | 231 | 86 |
| 2016 | 967 | 47 | 138 | 278 | 96 |
| 2015 | 1268 | 62 | 160 | 325 | 118 |

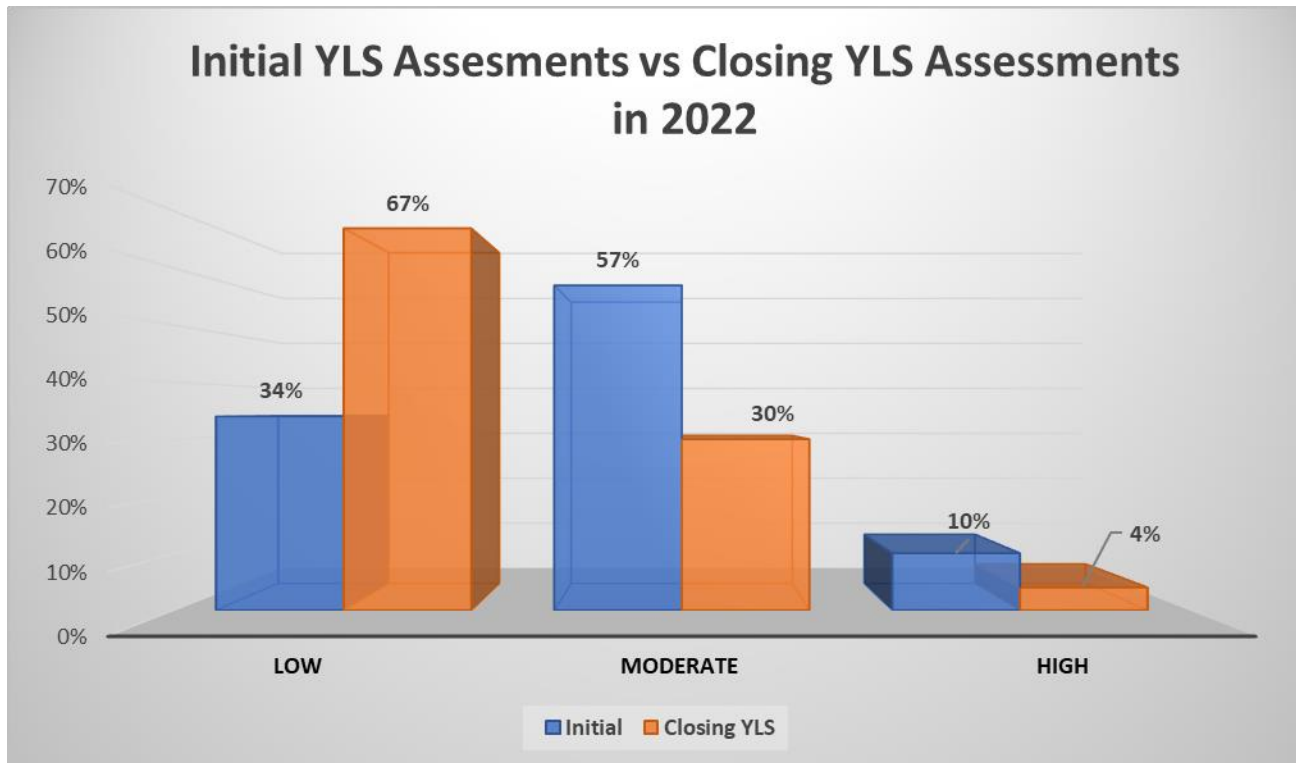
LEHIGH COUNTY JUVENILE PROBATION

Informal Adjustment: An out of court disposition where a case is diverted or handled informally, no petition is filed, and no adjudication of delinquency. Typically for a period of six months or less.

Consent Decree: A type of disposition where there is no adjudication of delinquency, yet a more structured form of supervision than an Informal Adjustment. Typically for a period of six months but can be extended for an additional six months.

Probation: A type of disposition following the filing of a petition and an adjudication of delinquency. The most structured and intensive form of probation supervision. Typically for a period of six months to a year but can last for up to age 21.

Placement: Following an adjudication of delinquency and a determination that a youth presents a risk to the community or that their needs are too significant to be handled in the community; the youth is committed to an out of home placement ranging from foster care through secure placement.



The Youth Level of Service/Case Management Inventory 2.0 (YLS/CMI 2.0™) is a gender and culturally informed, strengths-based risk/needs assessment tool that reliably and accurately classifies and predicts **re-offending** within male and female juvenile populations. The juvenile probation department has administered the YLS since 2009. The information above compares the initial YLS assessments to the assessments done at time of case closing. This information shows the change in risk level from the onset of supervision to the time supervision ends.

LEHIGH COUNTY ADULT PROBATION & PAROLE

| | <u>2018</u> | <u>2019</u> | <u>2020</u> | <u>2021</u> | <u>2022</u> |
|---|-------------|-------------|-------------|-------------|-------------|
| Number of cases investigated for parole or re-parole | 2029 | 1582 | 920 | 726 | 946 |
| Granted | 92% | 93% | 93% | 93% | 94% |
| Denied | 8% | 8% | 7% | 7% | 6% |
| Number of court reporting network evaluations (CRN) performed | 1703 | 1707 | 1156 | 1216 | 1342 |
| Number of pre-sentence investigations (PSI) completed | 342 | 376 | 177 | 305 | 294 |
| Number of defendants per average general supervision caseload | 124 | 110 | 77 | 76 | 71 |
| Parolees or probationers placed on out mate status | 40 | 19 | 4 | 0 | 0 |
| Total number of cases under supervision as of 12/31 | 4770 | 4576 | 3511 | 3159 | 3565 |
| Case type: | | | | | |
| Probation | 37% | 35% | 37% | 47% | 44% |
| Parole | 29% | 27% | 27% | 25% | 29% |
| ARD | 27% | 27% | 27% | 24% | 26% |
| Intermediate Punishment ¹⁴ | 7% | 11% | 9% | 4% | 1% |
| Offense types ¹⁵ | | | | | |
| Felony | 17% | 17% | 17% | 17% | 17% |
| Misdemeanor | 79% | 79% | 80% | 80% | 81% |
| Other ¹⁶ | 4% | 4% | 3% | 3% | 2% |
| Gender | | | | | |
| Male | 74% | 74% | 74% | 77% | 77% |
| Female | 26% | 26% | 26% | 23% | 23% |

Technical Parole Violation Recidivism Rates

The following table represents the recidivism rate summaries for offenders returning only due to technical violations of parole for each of the 2017 through 2021 datasets.

| | 2017 | 2018 | 2019 | 2020 | 2021 |
|-------------------------------|---------------|---------------|---------------|-------------|-------------|
| 3-year recidivism rate | 16.79% | 14.30% | 10.59% | | |
| 2-year recidivism rate | 15.79% | 13.34% | 9.63% | 10.56% | |
| 18 months | 14.72 % | 12.66% | 8.76% | 8.97% | |
| 1-year recidivism rate | 12.30% | 11.16% | 7.88% | 8.06% | 12.36% |
| 6 months | 7.97% | 7.69% | 4.54% | 4.43% | 7.26% |

**III LEHIGH VALLEY
PRETRIAL SERVICES, INC.
2022
YEAR END REPORT
LEHIGH COUNTY**

MISSION STATEMENT

The Mission of Lehigh Valley Pretrial Services, Inc. is to administer the bail system in Lehigh County as established by Local Rule of Court: to investigate and provide recommendations concerning the bail risk of defendants; to monitor defendants released to bail supervision; and to inform the Court of any breach of conditions of release. This is provided mindful of the law, due process, and the rights of defendants, but also with a firm commitment to respect the needs and concerns of the citizens of our community.

Leh.R.Cr.P.528. PERCENTAGE CASH BAIL SYSTEM.

- (1) Where percentage cash bail has been authorized by the bail authority, the Defendant for whom bail has been set (and any private third-party surety/depositor) shall execute the bail bond and deposit with the issuing authority or the Clerk of Courts-Criminal a sum of money equal to ten per cent (10%) of the amount of bail set, but in no event less than Twenty-five (\$25.00) Dollars. Corporate sureties or professional bail bondsmen or agents thereof are expressly prohibited from posting the deposit for the percentage cash bail system as provided in this Rule. However, where 10% cash bail is authorized, corporate sureties and professional bondsmen may, nevertheless, post bond, provided they do so for the full amount of the bail.
- (2) Prior to setting 10% cash bail, the bail authority shall generally seek and review the recommendations of the court designated bail agency.
- (3) Where a third-party becomes the depositor of the 10% cash on behalf of a defendant, that third-party shall become a surety for the balance of the full amount of the bail, and shall execute the bond as a surety.

Note: This Rule was part of the original bail rules 4006, 4006A, 4006B, 4006C and 4006D. They were adopted by an order dated March 23, 1984, and published at 14 Pa.B. 833 et seq. (March 17, 1984).

Leh.R.Cr.P.530. DESIGNATION OF LOCAL COURT BAIL AGENCY.

- (1) Lehigh Valley Pretrial Services, Inc., is designated as bail agency to monitor and assist defendants released on bail in criminal cases instituted in Lehigh County. This agency shall perform the duties and have the power set forth in Pa.R.Crim.P.530(A).
- (2) When a Defendant is released on any of the types of bail set forth in Pa.R.Crim.P.524(C)(1) through (4), or on 10% cash bail pursuant to Pa.R.Crim.P.524(C)(5) and 528(D)(1), the bail agency shall be designed by the bail authority to act as surety or supervising agency for the defendant, and the defendant shall then become subject to the rules and regulations of the bail agency. The bail agency shall not be required to sign the bail bond.
- (3) Whenever a defendant who is supervised by the bail agency fails to comply with the conditions of his or her release, or the rules and regulations of the bail agency, a bail piece may be issue pursuant to Pa.R.Crim.P.536(B) to the bail agency, and the defendant may be brought before the court to determine if additional bail shall be set or bail revoked.

Note: This Rule was part of the original bail rules 4006, 4006A, 4006B, 4006C and 4006D. They were adopted by an order dated March 23, 1984, and published at 14 Pa.B. 833 et seq. (March 17, 1984). The Rule was later amended to reflect the reorganization and renaming of the bail agency.

Leh.R.Cr.P.535. RETURN OF CASH DEPOSITS. CHARGES.

Upon full and final disposition of the case the issuing authority or the Clerk of Courts-Criminal shall retain thirty per cent (30%) of the amount deposited, but in no event less than Ten (\$10.00) Dollars, as administrative costs, which includes the Clerk's poundage fee for depositor at the time the balance is to be returned otherwise agrees in writing. The thirty per cent (30%) to be retained shall be considered as earned at the time the bail undertaking is executed and the cash is deposited by the defendant or the third-party surety.

Comment: Nothing in this Rule is intended to preclude the application of the seventy percent (70%) cash balance being applied to fines, costs, restitution, or to fees due the Defendants attorney of record, if agreed to in writing by the depositor at the time the money would otherwise be returned to the depositor. See Pa.R.Crim.P.535, the Comment to that Rule, and the Report of the Criminal Procedural Rules Committee, Pa.B. 6409 (December 27, 2003)

Note: This Rule was part of the original bail rules 4006, 4006A, 4006B, 4006C and 4006D. They were adopted by an order dated March 23, 1984, and published at 14 Pa.B. 833 et seq. (March 17, 1984).

MENTAL HEALTH EARLY DIVERSION

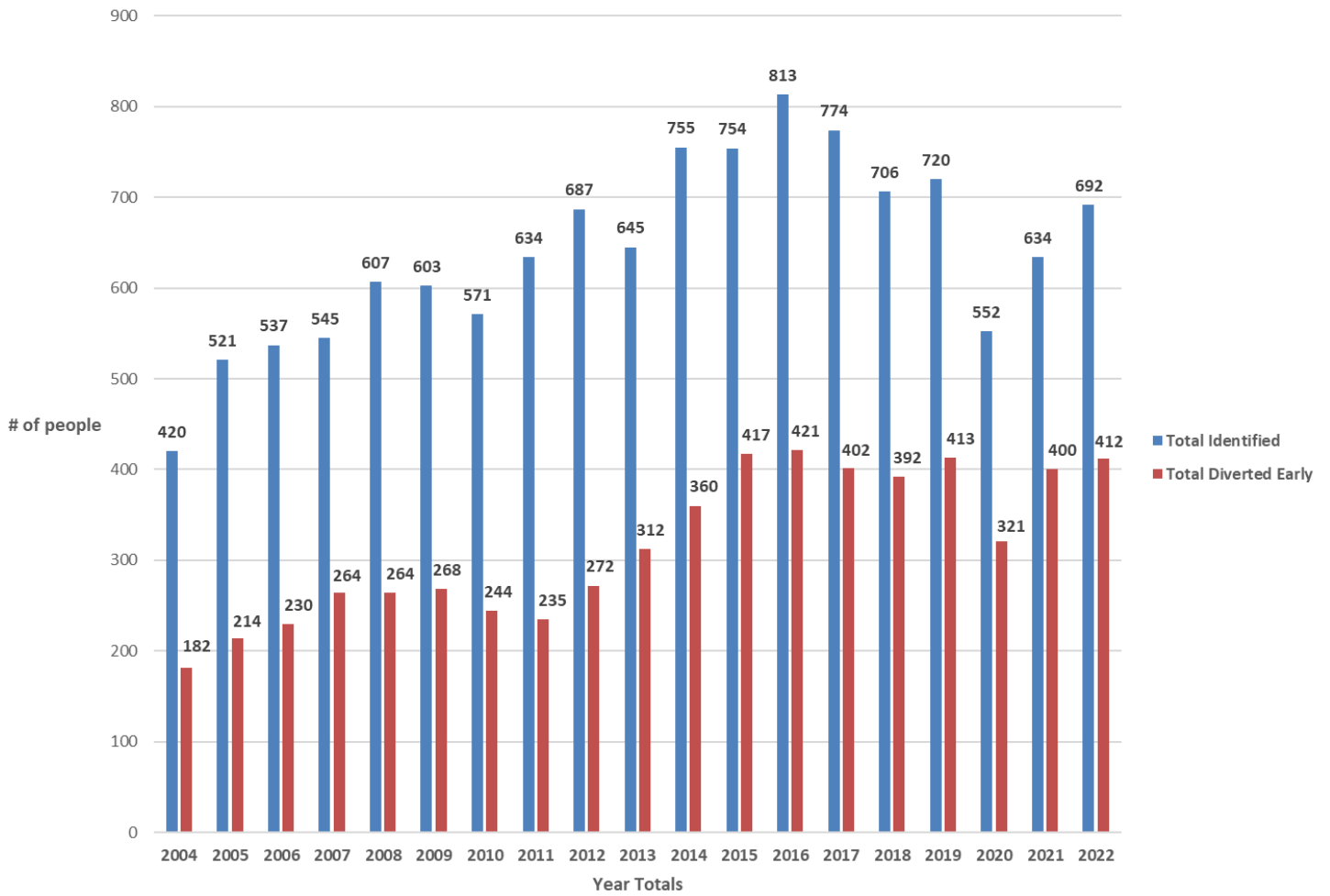
The targeted population in the Criminal Justice system are defendants with Mental Health concerns. This population is not only in general more expensive to incarcerate but very time intensive to work with as well. Since 2004 through 2022 Lehigh Valley Pretrial Services has identified 10,679, defendants in the targeted population and diverted 5,047 or 47% of them early from either being incarcerated or having them released from incarceration and into appropriate treatment.

This population of 5,047 early-diverted intensively supervised defendants has demanded excessive time and tedious efforts to ensure appropriate safe releases and to maintain Lehigh Valley Pretrial Services supervision and aftercare. This group of defendants was 15% of our supervised caseload in 2004, at the end of 2022 it is now 24% of our supervised caseload.

VETERANS POPULATION

Since 2011, Lehigh Valley Pretrial Services interviewed 1090 self-reported veterans. In 2022 out of the 106 self-reported number of veterans, 52 were released and supervised by Lehigh Valley Pretrial Services. This population can also demand excessive time and effort while under supervision.

LVPTS MH Early Diversion



LEHIGH VALLEY PRETRIAL SERVICES
2022 STATISTICS
JANUARY 1 THRU DECEMBER 31, 2022

| INTERVIEWS | TYPE OF BAIL | JAIL STATS | BAIL RECS. MAG. DISTRICT JUDGE | BAIL RECS. COMMON PLEAS | TOTAL BAIL RECS. MDJ/CP |
|-------------------------------|-------------------------|------------------------------|--|---------------------------------|-------------------------------|
| 675 | | | 910 | 167 | 1077 |
| 501 | 10% 382 | Committed no detainers | 529 | 121 | 650 |
| 587 | USBL 1277 | | 481 | 91 | 572 |
| 532 | ROR 1 | 915 | 394 | 132 | 526 |
| 622 | NOM 6 | Committed detainers | 554 | 165 | 719 |
| 549 | SURETY 32 | | 524 | 159 | 683 |
| 0 | CASH 18 | | 527 | 184 | 0 |
| | PROPERTY 0 | | | | |
| TOTAL: 3466 | | | TOTAL: 3576 | TOTAL: 835 | TOTAL: 4411 |
| | | No Bail 35 | | | |
| DISPOSTION | TOTAL CLIENTS | | %FTA YEAR | CONDITIONAL RELEASES | THIRD PARTY SURETY |
| Mag. District Justice | <i>Defendants</i> 1574 | Interviews | BW Issued 163 | 1361 | 138 |
| 465 | <i>Cases</i> 1711 | | BW Cleared 255 | | |
| Common Pleas | ----- | 1905 | FTA 10.20% | | |
| 1270 | ----- To Date | | FUGITIVES 0.91% | EARLY DIVERTED MENTAL HEALTH | CONSULT W/D.A. (RULE 529) |
| TOTAL: 1735 | <i>Defendants</i> 45998 | Bench Warrants | RELEASED CENTRAL BOOKING/ NITE COURT | | |
| TYPE OF DISPOSTIONS | | 428 | | | |
| Non-Custodial | | Released | 246 | 412 | 7 |
| 1545 88% | | 577 | | | |
| Custodial | <i>Active</i> 1229 | | | | |
| 218 12% | 12-31-22 | | | | |

**LEHIGH COUNTY
2022**

FOR BAIL TYPE = 10% TEN PERCENT

| | | | |
|------------------------------|-----|---|-----------|
| NUMBER OF CASES FOR TYPE | 10% | : | 382 |
| TOTAL BAIL AMOUNTS FOR TYPE | 10% | : | 3,723,100 |
| AVERAGE BAIL AMOUNT FOR TYPE | 10% | : | 9,798 |

FOR BAIL TYPE = CFA CASH FULL AMOUNT

| | | | |
|------------------------------|-----|---|--------|
| NUMBER OF CASES FOR TYPE | CFA | : | 9 |
| TOTAL BAIL AMOUNTS FOR TYPE | CFA | : | 63,500 |
| AVERAGE BAIL AMOUNT FOR TYPE | CFA | : | 7,056 |

FOR BAIL TYPE = NOM NOMINAL

| | | | |
|------------------------------|-----|---|---|
| NUMBER OF CASES FOR TYPE | NOM | : | 6 |
| TOTAL BAIL AMOUNTS FOR TYPE | NOM | : | 6 |
| AVERAGE BAIL AMOUNT FOR TYPE | NOM | : | 1 |

FOR BAIL TYPE = ROR RELEASE ON OWN RECOGNIZANCE

| | | | |
|------------------------------|-----|---|---|
| NUMBER OF CASES FOR TYPE | ROR | : | 1 |
| TOTAL BAIL AMOUNTS FOR TYPE | ROR | : | 0 |
| AVERAGE BAIL AMOUNT FOR TYPE | ROR | : | 0 |

FOR BAIL TYPE = SRTY SURETY

| | | | |
|------------------------------|------|---|---------|
| NUMBER OF CASES FOR TYPE | SRTY | : | 40 |
| TOTAL BAIL AMOUNTS FOR TYPE | SRTY | : | 400,000 |
| AVERAGE BAIL AMOUNT FOR TYPE | SRTY | : | 10,703 |

FOR BAIL TYPE = USBL UNSECURED

| | | | |
|------------------------------|------|---|-----------|
| NUMBER OF CASES FOR TYPE | USBL | : | 1283 |
| TOTAL BAIL AMOUNTS FOR TYPE | USBL | : | 9,123,660 |
| AVERAGE BAIL AMOUNT FOR TYPE | USBL | : | 7,167 |

| | | |
|--|---|------|
| RUNNING TOTAL – NUMBER OF CASES IN THE LISTING | : | 1721 |
|--|---|------|

LEHIGH COUNTY 2022 ANALYSIS OF FACTS

| | |
|--|--------|
| CASES UNDER SUPERVISION 12-31-2021: | 1,280 |
| CASES ORDERED TO SUPERVISION DURING YEAR: | 1,721 |
| TOTAL CASES SUPERVISED DURING YEAR: | 3,001 |
| CASES ORDERED DISPOSED DURING YEAR: | 1,770 |
| CASES UNDER SUPERVISION 12-31-2022: | 1,229 |
| TOTAL INTERVIEWS CONDUCTED: | 3,466 |
| BAIL RECOMMENDATIONS/INVESTIGATIONS TO JUDICIARY: | 4,411 |
| REPORTING (TELEPHONE, IN PERSON, OR EMAIL) BY DEFENDANTS TO STAFF: | 22,998 |
| LETTERS SENT TO DEFENDANTS: | 3,298 |
| CHANGES OF ADDRESS SENT TO DA AND MDJ OFFICES: | 670 |
| FAILURES TO APPEAR INVESTIGATED: | 307 |
| DEFENDANTS IDENTIFIED EARLY WITH SPECIAL MENTAL HEALTH CONCERNS | 692 |
| DEFENDANTS DIVERTED EARLY WITH SPECIAL MENTAL HEALTH CONCERNS: | 412 |
| SPECIAL CONDITIONS OF BAIL MONITORED (TREATMENT, VICTIM, ETC): | 1,361 |
| AVERAGE DAYS ON BAIL SUPERVISION PER CASE: | 154 |

SOME OF THE MONETARY OUTCOMES OF THE COURT DESIGNATED AGENCY, PRETRIAL SERVICES ARE MONIES EARNED FROM ADMINISTRATIVE FEES ON RECEIPT AND RETURN OF DEPOSITS RULE 535. ALSO DECLARED FORFEITED BAIL DUE TO VIOLATIONS OF RELEASE USUALLY, IT IS FAILURE TO APPEAR FOR COURT RULE 536. IN 2022 IT IS \$449,485.00.

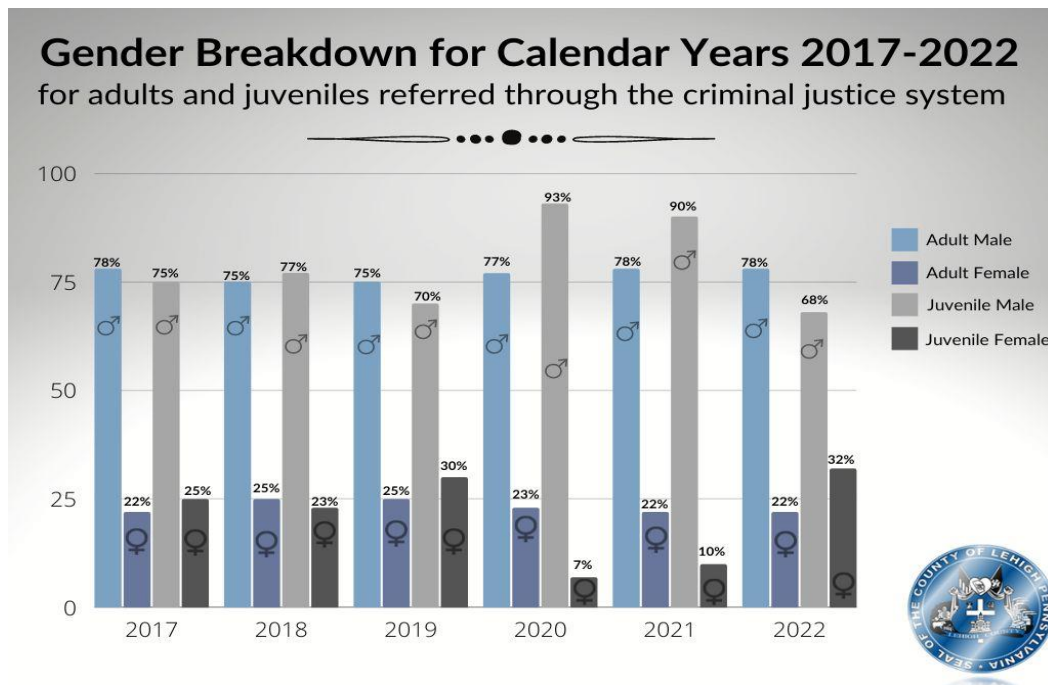
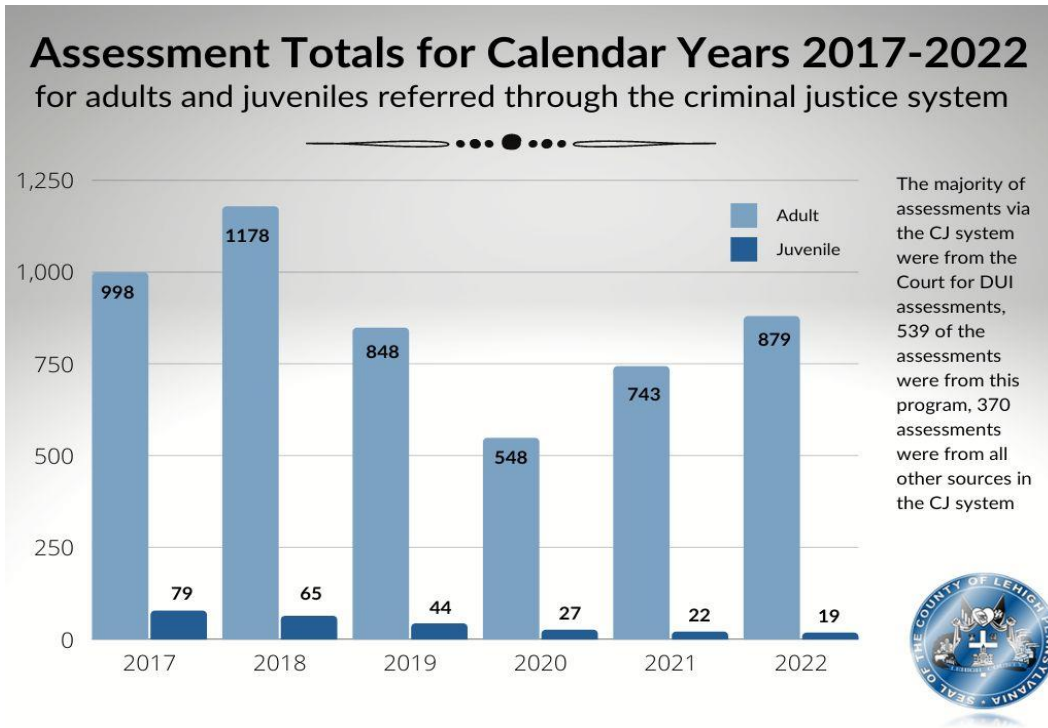
THE AVERAGE NUMBER OF DAYS ON BAIL 154, CASES ORDERED TO SUPERVISION 1721= 265,034 POTENTIAL JAIL DAYS SAVED, SIGNIFICANTLY REDUCING THE OVERALL COST OF LEHIGH COUNTY JAIL

LEHIGH VALLEY PRETRIAL SERVICES

| | <u>2018</u> | <u>2019</u> | <u>2020</u> | <u>2021</u> | <u>2022</u> |
|--|--------------|--------------|--------------|--------------|--------------|
| Total interviews conducted | 3681 | 3713 | 2961 | 3196 | 3466 |
| Veterans (self-report) | 117 | 107 | 52 | 89 | 106 |
| Total Cases Supervised | 2783 | 2785 | 2739 | 3094 | 3001 |
| New defendants supervised | 1703 | 1783 | 1621 | 1908 | 1721 |
| Released at preliminary arraignment or released by MDJ subsequent to summons hearing | 880 | 953 | 812 | 1003 | 1108 |
| Released from LCJ, post commitment | 592 | 655 | 601 | 688 | 655 |
| BW walk-ins released (post hearing) | 231 | 170 | 208 | 217 | 206 |
| Average days on supervision | 151 | 142 | 176 | 143 | 154 |
| Male | 68% | 66% | 73% | 75% | 72% |
| Female | 32% | 34% | 27% | 25% | 28% |
| 10% | \$7,770 | \$11,518 | \$9,430 | \$11,460 | \$9,798 |
| Surety | \$8,315 | \$11,278 | \$12,485 | \$15,221 | \$9,531 |
| Unsecured bail | \$7,862 | \$7,324 | \$7,803 | \$6,477 | \$7,167 |
| Identified ¹⁷ | 706 | 720 | 552 | 634 | 692 |
| Diverted ¹⁸ | 392 (56%) | 413 (57%) | 321 (58%) | 400 (63%) | 412 (60%) |
| Case Dispositions | | | | | |
| Custodial (Received a term of incarceration) | 24% | 22% | 17% | 11% | 12% |
| Non-Custodial (did not serve a term of incarceration) | 76% | 78% | 83% | 89% | 88% |
| Special needs mental health defendants addressed by Team MISA committee | 131 | 118 | 84 | 91 | 116 |

LEHIGH COUNTY DRUG & ALCOHOL ABUSE SERVICES

Though COVID-19 as a barrier has waned, workforce issues continue to present problems across the treatment system, causing barriers to efficient placement.

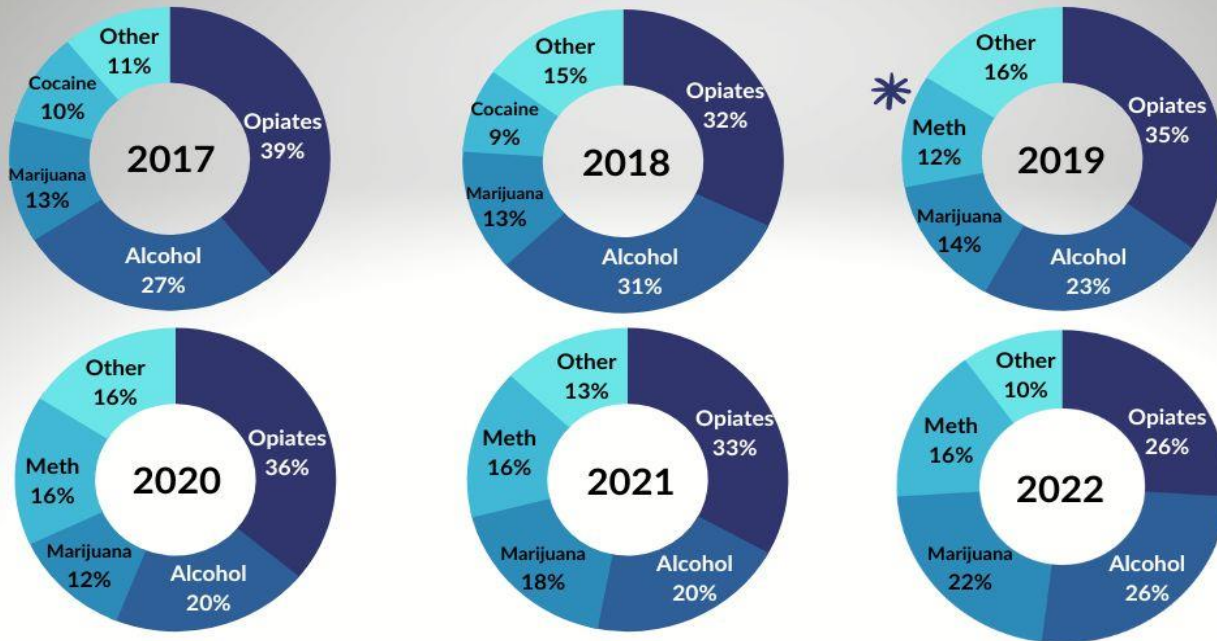


LEHIGH COUNTY DRUG & ALCOHOL ABUSE SERVICES

The top four primary substances used by adult clients referred via the criminal justice system shifted in 2019 when methamphetamine edged out cocaine. However, cocaine as a primary substance of use has remained steady at 9% from 2018-2021, and declined to 5% in 2022.

Opioids continue to be the top substance of use for adult criminal justice referrals to the SCA.

Primary Substance Data for Years 2017-2022 for adults referred through the criminal justice system



* In 2019, Methamphetamine replaced cocaine in the top 4 primary substances. While it appears opioids are on the decline the numbers of people with opioids reported as a secondary or tertiary substance has grown.

Juvenile Data:

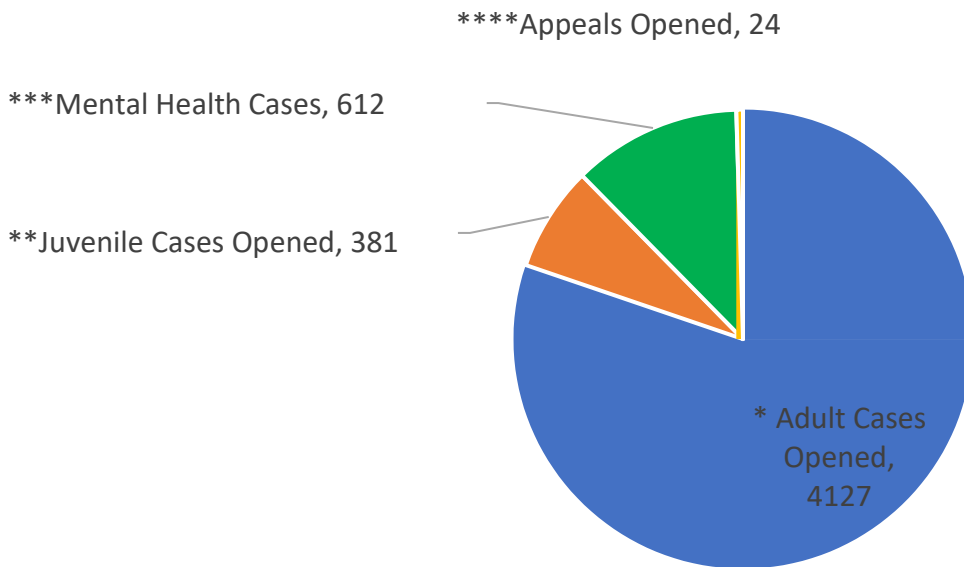
Criminal justice referrals for juveniles continue to remain at low levels. Of concern is the increase in methamphetamine use. However, with a small number of individuals in this data set, broad conclusions cannot be made. Values in green indicate an increase over the previous year, red a decrease, and yellow, no change.

| Substance | 2017 | 2018 | 2019 | 2020 | 2021 | 2022 |
|-----------|------|------|------|------|------|------|
| Marijuana | 90% | 89% | 93% | 93% | 100% | 79% |
| Opiates | 2% | 2% | 0% | 0% | 0% | 0% |
| Alcohol | 4% | 2% | 2% | 3% | 0% | 5% |
| K2 | 0% | 0% | 0% | 0% | 0% | 0% |
| Meth | 1% | 0% | 0% | 0% | 0% | 16% |
| % Totals | 97% | 93% | 95% | 96% | 100% | 100% |

OFFICE OF THE PUBLIC DEFENDER

2022 Case Load

(Numbers do not include Bench Warrants, Costs and Fines Cases or any other case for which there is no application/jail request or court appointment.)



- *Includes MDJ Level, Common Pleas Level, P.V.s.
- **Does not include direct file cases
- ***Civil Commitments
- ****Transfers from Trial Attorney to Appellate Attorney

FOOTNOTES

- 1 The percent of cases disposed, without considering the initiation of bench warrants as dispositions.
- 2 Cases that have been transferred from criminal court to juvenile court or remanded to an MDJ for further court proceedings.
- 3 Disposition whereby a case involving a non-violent charge(s) was dismissed upon consent of the commonwealth or satisfaction to the aggrieved person
- 4 All persons being held under Lehigh County authority, as well as arrestees detained for other jurisdictions awaiting pick-up. These numbers do not include Per Diem Holds, 7X transfers, or Outmates.
- 5 Racial breakdown is self-reported and based on the total number of commitments being held under Lehigh County authority only. This does not include per diem holds, 7X transfers or Outmates.
- 6 Serving a term of sentence by a Judicial authority on at least one case, including, but not limited to state and county parole violators.
- 7 Not currently serving any term of sentence and includes bench warrants & county probation violators.
- 8 Includes data of incarcerated Lehigh County Authority defendants that are held in lieu of bail and could be discharged with no additional holds. 2019 includes data from July 2019 to December 2019 only.
- 9 Arrestees detained for other jurisdictions awaiting pick-up, as well as inmates temporarily transferred here via writ, another county, other jurisdiction or sentenced to a SCI.
- 10 Formula used to calculate ALOS (Average Length Of Stay) changed in 2022.
- 11 Psychiatric data collected from all commitments, including per diem holds from other jurisdictions. Early in 2016, Prime Care Medical, the Department of Corrections' Medical Provider, made procedural changes which made a direct impact on the number of persons evaluated by MH staff within the first 14 days of incarceration. Certain information at the time of Booking assigns tasks to the Mental Health staff. Previously, all referrals were seen within 24 hours. Currently, the tasks are triaged and the focus is on the "at risk" population and those in need of acute care. Therefore, many of the inmates referred are released on bail within the first few days and subsequently not seen.
- 12 Referrals adjusted to not include non-payment cases or violations of probation.
- 13 Number of Felony and Misdemeanor cases exceeds number of referrals because, often, the youth is charged for multiple events of criminal activity.
- 14 Intermediate punishment includes GPS (Global Positioning), Community Work Service Project, Retail Theft Rehabilitation, etc.
- 15 Offense types refers exclusively to Parole Violations – NOT Probation Violations.
- 16 "Other" offense type would include Summary Offenses, Indirect Criminal Contempt, Traffic Violations.
- 17 Defendants/Inmates who by self-report and/or information obtained by family, agency, physician, etc. have experienced mental health problems or have been diagnosed with a major mental illness.
- 18 Identified defendants who were able to secure appropriate alternatives to incarceration prior to booking into LCJ.

ADDENDUM

Addendum No. 1

CPCMS Statistical Report Glossary

Unit of Count: Offense Tracking Number (OTN). One OTN equals one reportable case.

Cases (OTNs) Pending from Last Month's Report: All cases pending adjudication in Common Pleas Court at the end of last month. Cases awaiting sentencing are NOT included.

New Cases (OTNs) Received this Month: The number of new OTNs filed in Common Pleas Court during the report month. Included are juvenile cases that have been certified to adult court. Excluded are district justice fugitive cases.

Cases (OTNs) Reopened this Month: Previously disposed cases that were reopened during the report month. Common examples of reopened cases include fugitives returned, defendants deemed mentally fit for trial, ARD revocations, etc.

Cases (OTNs) Available for Disposition: This number is the sum of *Cases Pending from Last Month's Report* Plus *New Cases Received this Month* plus *Cases Reopened this Month*.

Cases Disposed By: A case is considered disposed at the common pleas level when a judge accepts a guilty plea, renders a verdict, the jury returns a verdict, or the case is otherwise adjudicated.

Categorized Dispositions: The sum of cases disposed this month in the following categories: Jury Trial, Non-Jury Trial, Guilty Pleas, Dismissals, No Penalty Dispositions, Inactive, Transfers, Administrative Closures, Other.

Uncategorized Dispositions: Cases disposed during the report month which do not fall into any of the standardized disposition categories.

Cases (OTNs) Disposed This Month: The sum of the Categorized Dispositions, Uncategorized Dispositions and the temporary adjustment category, "Non-trial Dispositions."

Cases Pending at End of Month: The number of cases awaiting disposition at the end of the month. *Cases (OTNs) Available for Disposition* minus *Cases (OTNs) Disposed This Month*.